



ADAMS - CHANGE MOVEMENT LEG DESTINATION NOT UPDATING RELATED UMLS

Last updated: 01 September 2023

Applies to: LOGFAS versions up to 9.0.0

Table of contents

1.	General.....	3
2.	Symptoms.....	3
3.	Cause	3
4.	workaround.....	4
5.	Resolution.....	4

Document change log			
Version	Comments	Date	Author
1.0	Initial version	29 AUGUST 2023	Hans Mijnhart
1.1	Reviewed	31 AUGUST 2023	Andras Amann

ADAMS - Change Movement Leg Destination Not Updating Related UMLs

1. GENERAL

When changing the destination of a (Partially) Sourced Unit Movement Leg, the destination of the Mission is also updated (expected behaviour).

However, when the affected Mission is a shared Mission the destination of the other Unit Movement Legs that are also transported by this shared Mission are not changed (unexpected behaviour). This corrupts the DDP and hence causes unwanted results.

2. SYMPTOMS

ADAMS; Movements view; Change Movement Leg Destination option for Sourced UML(s) will also update the associated Mission(s): if the mission is shared (loaded) by other UML(s), these UML(s) are not updated with the new location name, this will result in a mismatch between UMLs and Mission Paths/Manifest.

- The UMLs and its inventory are still in the Manifest of the Mission(s).
- In the Movements view; the planning status is still Sourced, even when the Destination of the UMLs are still listing the original location name.

Identifier	CRD	Component	MOT	Origin	Destination	Planning Status	Early Departure	Early Arrival
099A0101L-T	40	TEU PTY	Sea	GEZA SP	BREVIK SP	Sourced	01/10/2023 15:40	05/10/2023 12:17
099A0101L-R	40	RS PTY	Sea	GEZA SP	CALTROP SP	Sourced	01/10/2023 15:40	04/10/2023 04:32
099A0201L-TT	40	TEU PTY	Sea	GEZA SP	CALTROP SP	Sourced	01/10/2023 15:40	04/10/2023 04:32
099A0201L-HI	40	HET PTY	Sea	GEZA SP	CALTROP SP	Sourced	01/10/2023 15:40	04/10/2023 04:32
099A0201L-R	40	RS PTY	Sea	GEZA SP	CALTROP SP	Sourced	01/10/2023 15:40	04/10/2023 04:32

- UML Inventory; inventory items are Not Loaded, Execution Status is still displaying; Sourced (Planned).

NIC/RIC	Item Name	Nesting	Quantity	Total (kg)	Loaded	Not loaded	Execution Status	Force ID	Component ID
09900004	TRUCK 5 TON 6X6	No	4	64400	0	4	Sourced (Planned)	BROWNLAND REGT	RS PTY
09900014	TRUCK 5 TON OFFICE	No	20	300000	0	20	Sourced (Planned)	BROWNLAND REGT	RS PTY
09900003	TRUCK LIGHT UTILITY	No	10	22100	0	10	Sourced (Planned)	BROWNLAND REGT	RS PTY
09900008	TRUCK CARGO HEAVY	No	2	54200	0	2	Sourced (Planned)	BROWNLAND REGT	RS PTY

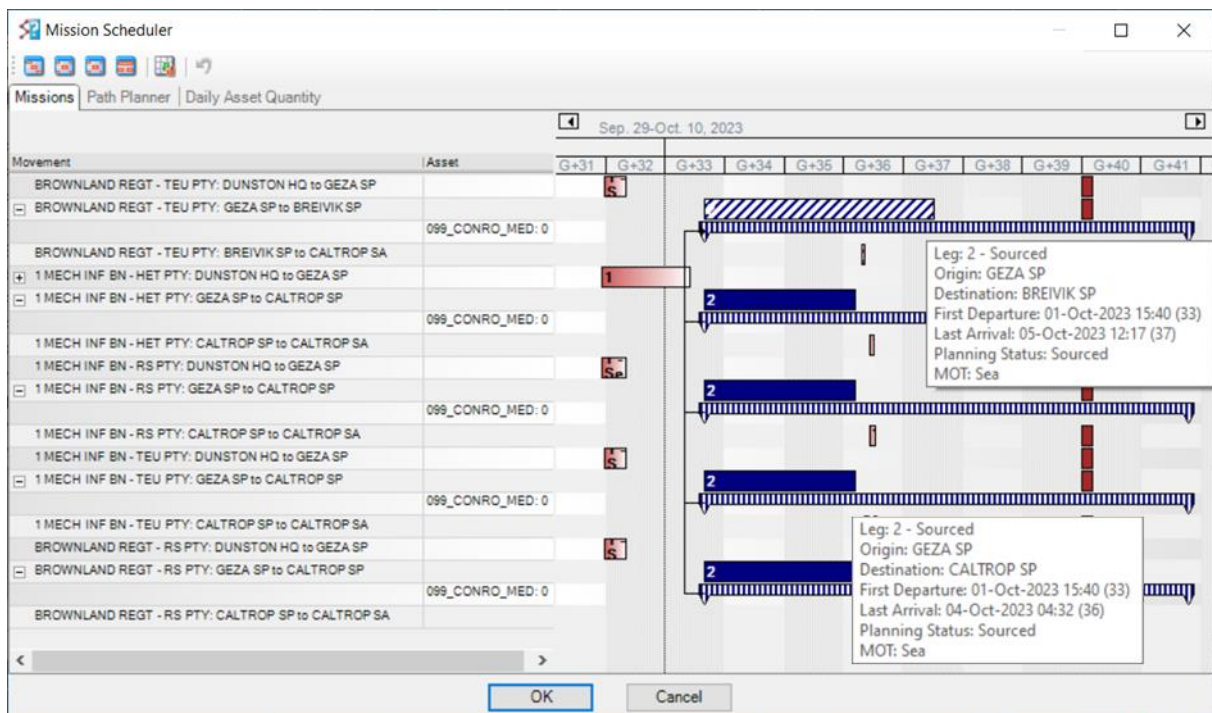
Category	Pax	Rolling Material	Containers	Air Plt	Consumables	Misc.	Self Depl.	LM	Tons	m2	m3
Wheeled SelfDeployable (WR)	0	36	0	0	0	0	0	254	441	595	1645

Totals	Pax	Rolling Material	Containers	Air Plt	Consumables	Misc.	Self Depl.	LM	Tons	m2	m3
Selected											
All		36						254	441	595	1645

- Mission Scheduler shows also the mismatch between the UMLs. (but not complaining).

3. CAUSE

When changing the destination of a (Partially) Sourced Unit Movement Leg, the destination of the Mission is also updated. However, when the affected Mission is a shared Mission the destination of the other Unit Movement Legs that are also transported by this shared Mission are not changed. This corrupts the DDP and hence causes unwanted results.



Mission scheduler window; it is clear to see that the Missions are shared, and only the movement bar from the first Movement is updated and shows the new destination of BREIVIK SP, the other four movements have still CALTROP SP as destination.

4. WORKAROUND

- Undo the Change Movement Leg Destination step, by changing back the Movement Leg Destination to the original leg destination location.
- Delete the shared Mission(s).

5. RESOLUTION

This problem is going to be fixed for LOGFAS 9.1.0 minor release.